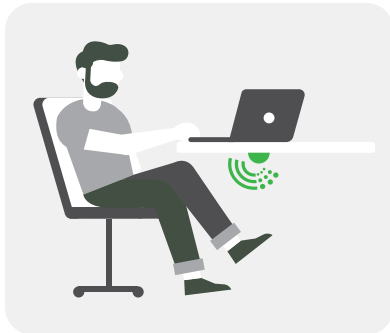


SenzoLive Occupancy Sensor Family

SenzoLive provides a versatile selection of occupancy sensors for all types of office workspaces, from individual desks to open space to phone booths. SenzoLive occupancy sensors connect to the cloud analytics through your office Wi-Fi, so that no additional infrastructure or gateways are needed. With SenzoLive, office utilization can be monitored, analyzed and optimized across the entire enterprise space.

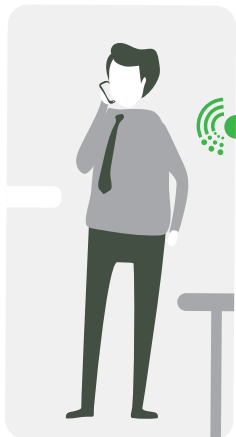
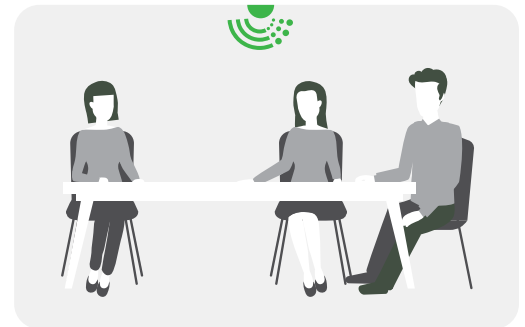


Senzo-U - Desk Occupancy Sensor

Senzo-U is an active high-accuracy occupancy sensor, that is installed under desks. It scans occupancy status every 5 seconds and sends the data to the cloud dashboard. With USB power option, it becomes maintenance-free, ideal for permanent use with desk booking applications. With a battery option (Senzo-UB), it can be used as a mobile sensor for short term studies.

Senzo-C - Ceiling Occupancy Sensor

Senzo-C scans the office area under the sensor. It counts the number of people in an open space, cafeteria, collaborative space, or sofa sitting areas. It's also ideal for meeting rooms of 10 seats or larger. Traffic flow direction is also provided. PoE power option.



Senzo-P - Motion Sensor

Senzo-P is a passive infrared motion detector. It monitors if anyone is using the space, providing occupied vs. not-occupied status of the space, such as indoor phone booth, silent rooms or focus rooms. It does not provide people count. Senzo-P has both battery and external power options.

	Senzo-U	Senzo-C	Senzo-P
Individual desk, flex space, hot desk	✓		
Meeting room <10 seats	✓		
Meeting room 10+ seats		✓	
Collaborative space, open area, cafeteria, sitting area		✓	
Phone booth, silent room, focus			✓