

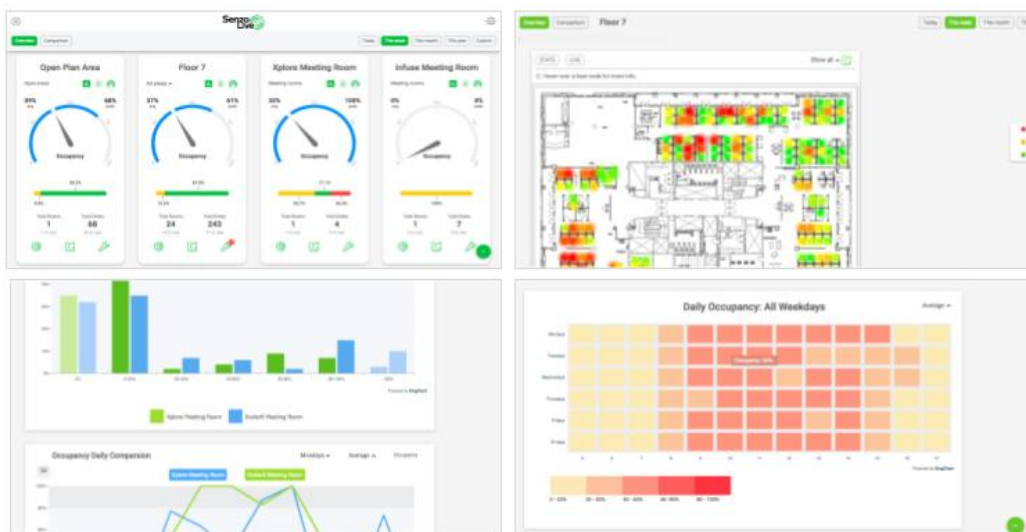


# SENZOLIVE DATASHEET

SenzoLive provides accurate occupancy data and real-time visibility into office space utilization enterprise wide

## Features

- Occupancy sensors with dashboard analytics
- Measures work seat occupancy in real-time
- From building to floor or desk level utilization data
- No-battery maintenance-free sensors
- Industry leading 98% data accuracy
- Using existing Wi-Fi with secure VLAN
- Non-video sensor for private and anonymous monitoring



SenzoLive's powerful cloud dashboard and reports provide real-time occupancy data from the work desk to enterprise-wide monitoring

## Benefits

- **Optimize Workplace:** Gain real-time visibility into space utilization across the enterprise – understand why certain work areas have low utilization and make the necessary improvements to optimize the workspace.
- **Accurate Data:** Floor walks measuring occupancy are typically conducted for 1 week and observing a floor's utilization every 3 hours. SenzoLive solution is 50% more accurate than these conventional methods, with data being captured every 5 seconds.
- **Saves Cost:** A 20%+ reduction in real estate space can positively impact annual net profit from between 2 to 5%. Through controlling In-Building systems and devices, based on occupancy, it is also possible to dramatically reduce energy expenses.
- **Increase efficiencies:** Introducing new ways of working that leverages technology, delivers an improved working experience resulting in increased efficiency and productivity amongst employees.

## Easy installation and maintenance free solution



SenzoLive sensors are easy to install under any work desk or meeting table

## Sensor specifications

### Hardware

---

Certifications	FCC, CE, CB
Part number	11PO 32CB11 1017
Power input	5V/1A
Operating Temperature	0 - 50 C (32 - 122 F)
USB power connector	Micro USB
Communication	Wi-Fi IEEE® 802.11 b/g/n
Security	WEP/WPA/WPA2 Personal/Enterprise
Occupancy sensor	3 parameter sensing
Sensor accuracy	98% in 5-sec intervals
Operating condition	90% RH% max., non-condensing
Dimensions	87mm x 48mm x 37mm (3.4"x1.9"x1.5")
Weight	69g (2.43oz)

### Software

---

Cloud platform dashboard updates	2 minutes default, adjustable
Cloud API	REST API, sensor status, statistics
Standard reports	Live floorplan view, Heatmaps, AVG and Peak occupancy, Meeting room efficiency, Comparison tool, Unlimited platform users
Custom reports	Customer tailored reports available

---

**SenzoLive HQ**  
Teknobulevardi 3  
01530 Vantaa  
Finland  
Tel: +358 (0) 9 4282 7889

**SenzoLive USA**  
177 Huntington Ave.  
Boston, MA 02115  
USA  
Tel: +1-703-504-8157

**SenzoLive APAC & EMEA**  
APAC:  
Tel: +65-8738-1387  
UK & MENA:  
Tel: +27-83-326-3974

